

RCAD 4.0 for Infi-90 / Net-90 DCS

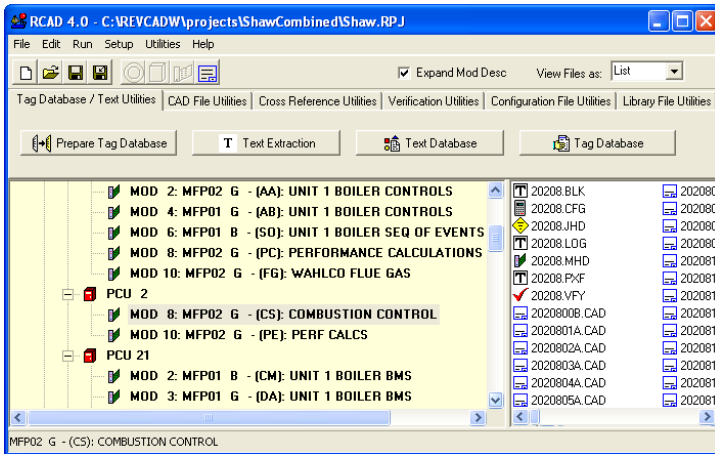
Complete Engineering Workstation Solution

C.A.R. Systems Ltd. is proud to present RCAD 4.0, a complete suite of Engineering Tools to compliment the ABB Automation Inc. Infi-90 and Net-90 DCS.

simultaneously while only one user may write to any module at any given time. The RCAD 4.0 server maintains an internal list of all clients connected to the CIU and is responsible for blocking any user attempting to write to a module that is currently being written to by another client.

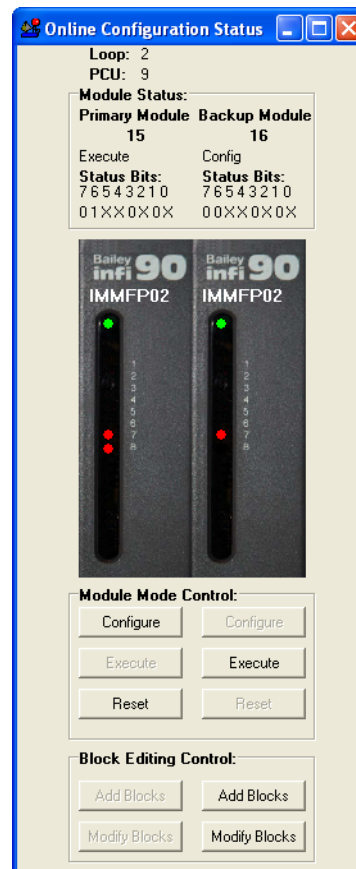
Editing Drawings has never been easier!

Our CADVIEW windows EWS editor permits users to easily edit their drawings. Using a Multiple Document Interface, users may add, delete and explore their DCS configurations in this easy to use graphical interface. Monitoring of multiple CAD drawings is permitted. While each client connects to the CIU via a TCP/IP connection, monitoring individual block outputs may bottleneck the CIU (running at 19.2 Kbaud). Not true with RCAD 4.0. The RCAD 4.0 server automatically sets up a monitoring cache which permits clients that are monitoring block outputs retrieve live plant data instantly from the server. The server will automatically update its monitoring cache every second.

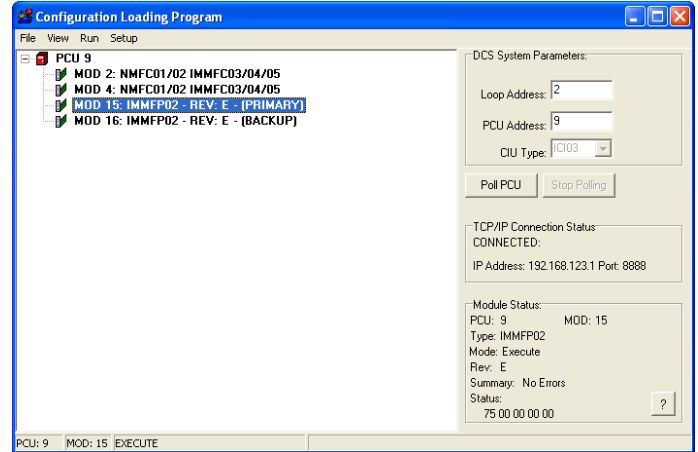
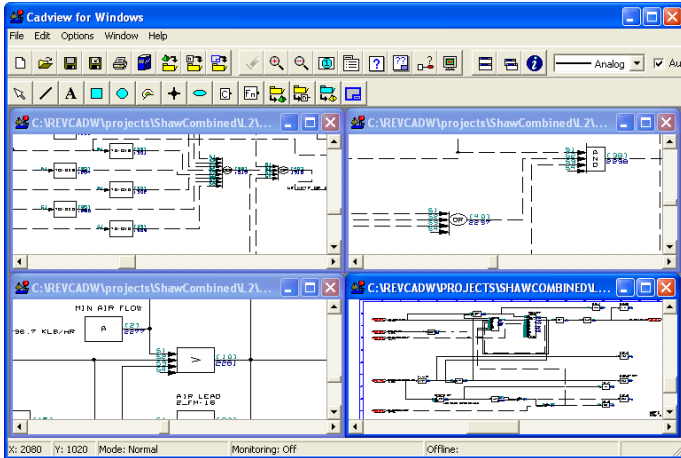


Features include:

- True Windows 32 Bit CAD Compiler
- Project Oriented front end
- Tag Database Maintenance
- Edit, Save and Print CAD drawings via our CADVIEW editor
- Superior Block Location Utilities (locate a block anywhere instantly.)
- Edit, Add and Delete Blocks from CFG files
- Combine user libraries instantly
- TCP/IP CIU Sharing Client / Server architecture (Multiple clients share the CIU simultaneously)
- Automatic Client lockout of modules being written to (Only 1 client can write to a module at a given time).
- Multiple clients may read from module simultaneously
- Complete Seamless EWS CIU Package (Upload / Download / Monitor / Tune / Online Configuration Changes / Change Module Mode).
- View Module Problem Reports.
- Secure TCP/IP connection to CIU (Internet Compatible)
- Compatible with SPM01, CPM01-03, CIU01, CIU02, CIU03, CIU04 and CIC01, ICI01, ICI12 and ICI03 (SLC02 with CIC communications module also supported)
- New Global Save Verify Routines to Save CFG files and verify for multiple modules.



With the addition of a Client / Server Architecture, multiple users may now communicate through a single CIU to their Infi-90 DCS. Multiple clients may read from any module



CADVIEW Features:

- Easy to use Windows interface
- Add / Delete / Edit blocks using an easy to read windows environment.
- Utilize true windows cut / copy and paste functionality retaining all block numbers and internal specs of cut blocks
- User library preview functionality permits identification of individual user shapes and macros without having to print the contents of large user libraries.
- Network compatible library search path means multiple clients may share the same user library without multiple copies of the same library becoming too large to maintain.
- CADVIEW connects to the RCAD 4.0 server as a client through a seamless TCP/IP connection.
- Superior block location utilities. Locate any block on any drawing instantly.
- Verify contents of individual blocks to saved configuration files without having to print the contents of the configuration files.
- Block Specification properties are color coded to permit easy identification of internal and external specifications.

Configuration Loading Program

Our Configuration Loading Program (CLP) permits users to easily save and edit module configuration files. Users connect to the CIU via a seamless TCP/IP connection. Because the connection is Client / Server based, multiple users may safely share the CIU communications path to permit simultaneous saving of configuration files. The TCP/IP connection permits users to remotely maintain their DCS using the internet as a backbone.

CLP Features:

- Secure and Seamless TCP/IP connection to CIU communications

- Upload / Download module configurations
- View module status bytes and interpret individual status bits in an easy to read user interface.
- View module problem reports
- Change module mode (Execute / Configure / Initialize / Reset)
- Perform Online Configuration changes to redundant modules using a very user friendly interface identifying the status bits of each module and the front panel LEDs. Quickly step through the Online Configuration process and monitor the modules' progress
- Monitor block outputs in a spreadsheet based user interface.
- Utilize smart write technology for tuning blocks in real time. Depending upon the mode of the module, CLP will either write block specifications to the module using a write algorithm (if the module is in configure mode) or a tuning algorithm (if the module is in execute mode). This is done automatically.

RCAD 4.0 System requirements

Both Client and Server:

- Intel Pentium III based system (500 MHz or more)
- 1.0 GB Ram
- 60 MB Hard drive space
- TCP/IP network adapter card (10 MHz or 100 MHz)
- Windows 95 / 98 / ME / NT4.0 / 2000 / XP (Pro or Home)

Distributor Information:

Process Control Outlet
 5517 East Rd.
 Baytown, TX 77521
 P: 281-421-1321
 F: 281-421-2683
 E: sales@pco2.com